

SOMERBY 
LAKE NONA

Live the life you so
richly deserve.



new way to feel more at home.

In many ways, life at Somerby Lake Nona is just what you would imagine. Spacious apartments. A caring staff. The beautiful, Florida surroundings. But it only takes a slightly deeper look to discover that it offers all those things and so much more.

Somerby Lake Nona is operated by Bridge Senior Living, which means we go beyond the expected. We strive to care more. To innovate more. To inspire more. All to help you create a lifestyle that is as abundant and fulfilling as you dare to dream.





The beauty of Florida inside and out.



Somerby Lake Nona is tucked in a palm-tree-lined-enclave in eastern Orlando. But its location is just as convenient as it is peaceful, so you're never far from whatever you want – be that a relaxing night at home or an evening show in town.



Where are we?

9682 Lake Nona Village Place
Orlando, FL 32827
866-488-5442





IMAGE OF ORLANDO, FL SURROUNDING AREA

A sanctuary for every season.

On the journey of life, we
sometimes get to choose our paths,
and sometimes we encounter
unexpected detours.

As a Bridge Senior Living community, Somerby
Lake Nona helps create rewarding lifestyles
for all our residents. With Assisted Living,
Memory Care, and Respite Care options, along
with round-the-clock expert health services
and support, life here always fosters a sense of
serenity, safety, and satisfaction.



Your desire to stay active can still be fulfilled, thanks to the expert care of Somerby Lake Nona's friendly professionals.

Assisted Living

A helping hand toward a happier life.

With the support of friends and family, aging successfully is rarely a solitary achievement. But sometimes, the need for more consistent help arises. Fortunately, your desire to stay active can still be fulfilled, thanks to the expert care of Somerby Lake Nona's friendly professionals.

Naturally, help is available daily, so your security is ensured. We also feature an emergency response system, daily check-ins, and a medication management service so you never have to worry about what to take or when.

A few other common ways our associates assist with daily activities include:

- ***Assistance with bathing and dressing as needed***
- ***Help getting in and out of bed***
- ***Help getting to meals and other activities***
- ***Additional assistance at mealtime if needed***
- ***Discreet personal care whenever needed***

For Assisted Living residents, we offer a dozen floor plans, ranging from studio/1-bath options to a 2-bedroom/1-bath layout.

All apartments include

- Individual thermostat controls
- Modern kitchens
- Washers and dryers in each apartment
- Utilities (electricity, water, telephone, cable, and wifi)
- Housekeeping
- Trash service
- Pest control
- No property taxes

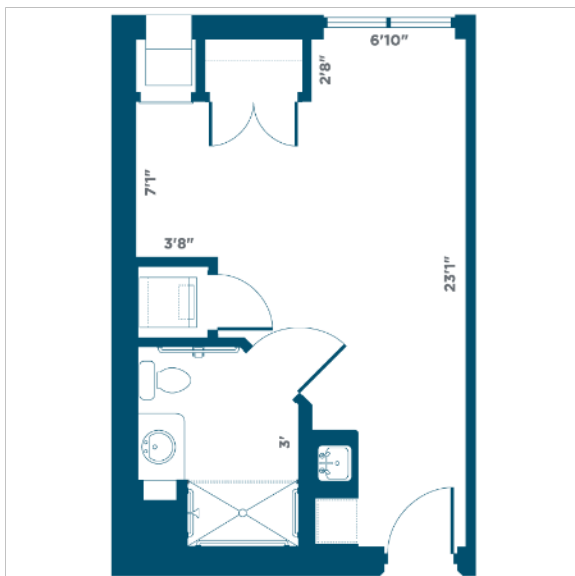
Of course, they're pet-friendly too.

*Additional costs may apply.



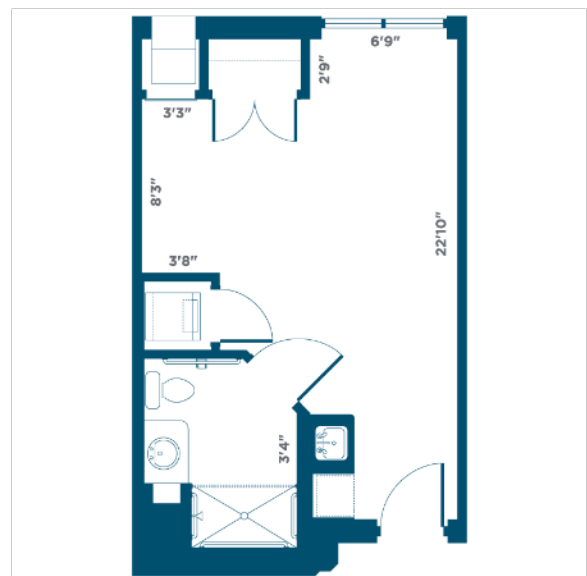
The Primrose

327 sq. ft. — Studio/1 Bath



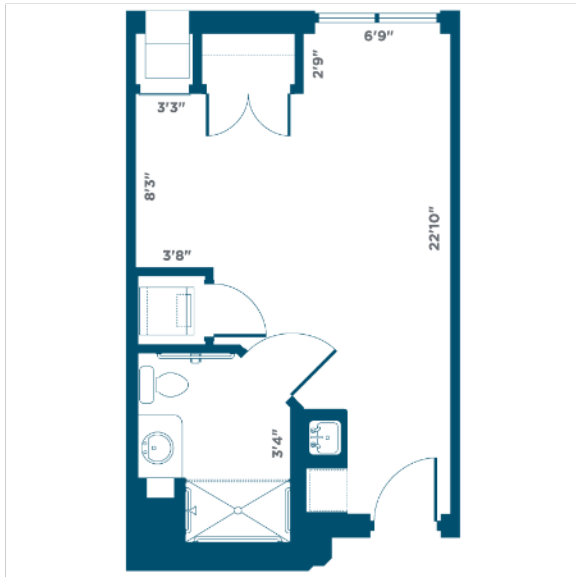
The Vickrey II

333 sq. ft. — Studio/1 Bath



The Vickrey I

334 sq. ft. — Studio/1 Bath



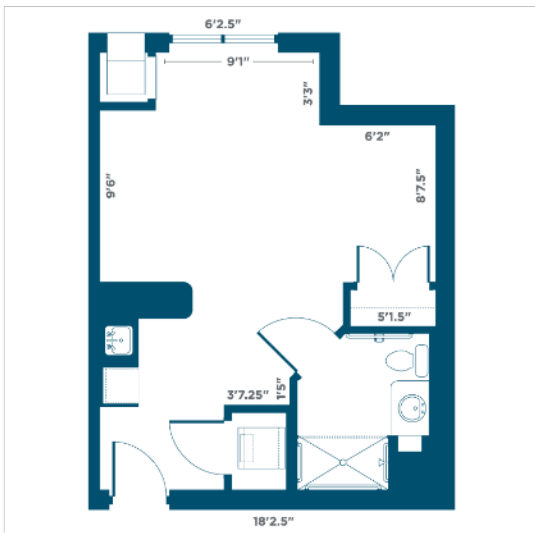
The Atterbury

370 sq. ft. — Studio/1 Bath



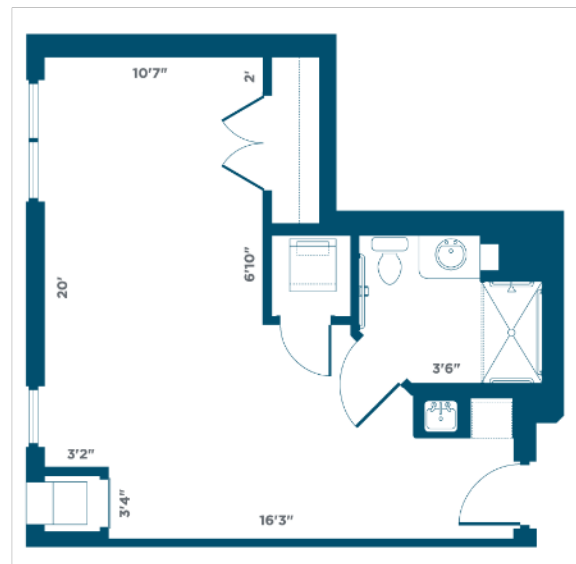
The Magnolia

400 sq. ft. — Studio/1 Bath



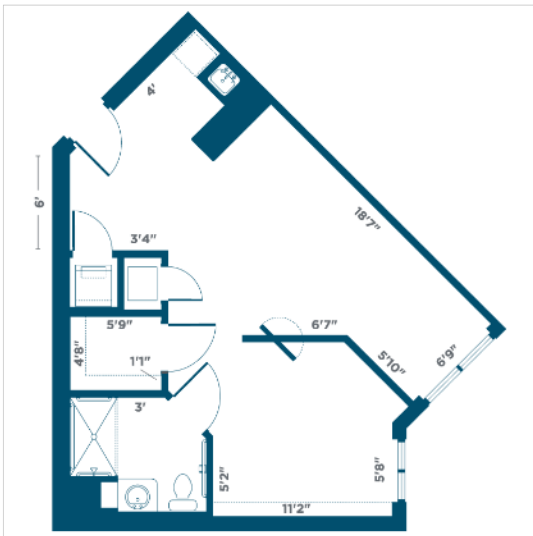
The Edgewater

448 sq. ft. — Studio/1 Bath



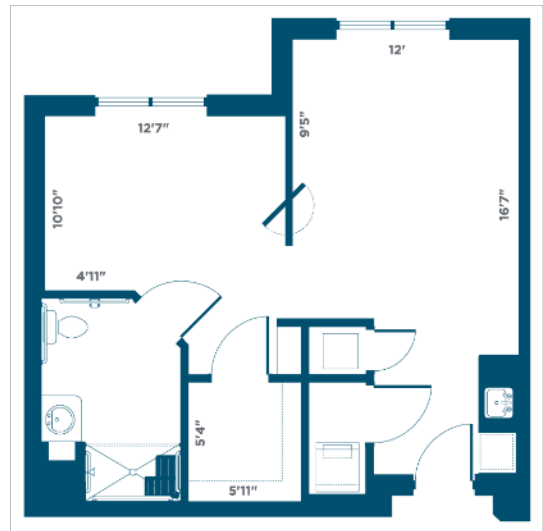
The Laureate

447 sq. ft. — 1 Bedroom/1 Bath



The Mayfair II

518 sq. ft. — 1 Bedroom/1 Bath



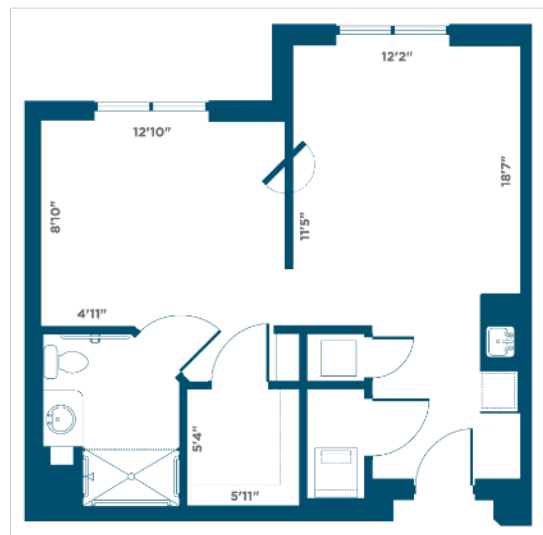
The Kensington

522 sq. ft. — 1 Bedroom/1 Bath



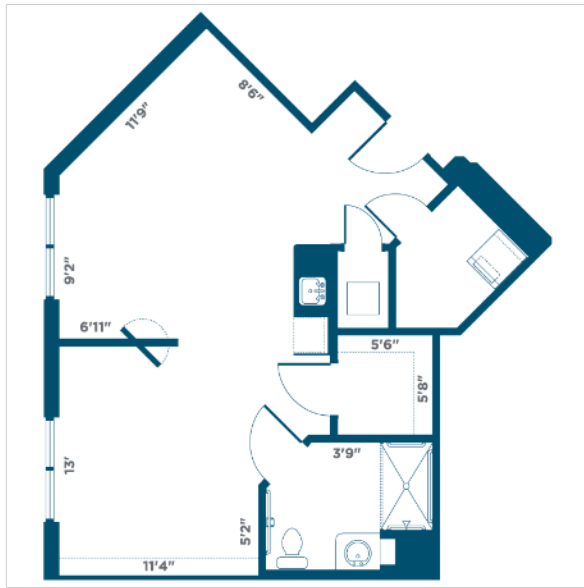
The Mayfair I

522 sq. ft. — 1 Bedroom/1 Bath



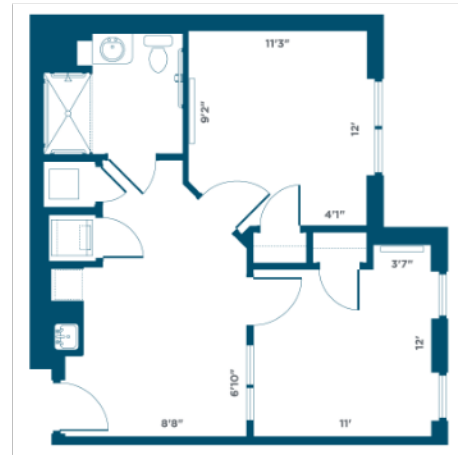
The Enclave

531 sq. ft. — 1 Bedroom/1 Bath



The Bevington

520 sq. ft. — 2 Bedroom/1 Bath



Memory Care

Making the most of every day.

If you have a loved one experiencing cognitive issues, it's encouraging to know there's a place like Somerby Lake Nona. A place where every day is designed to be as positive and productive as possible. To help ensure that happens, every staff member on our Memory Care team undergoes specialized training, resulting in a combination of expert care and extraordinary empathy that both your loved one – and your entire family – will appreciate.

Some features of our Memory Care living include:

- ***Daily on-site support of trained staff***
- ***Nutrition management***
- ***Assistance, including extra social and one-and-one time, to help each resident experience as much joy as possible every single day***
- ***Emotional support using proven techniques individualized for each resident***
- ***Family-centered consultation and involvement to help achieve consistently better outcomes***



Memory Care apartments are available in two studio suite layouts.

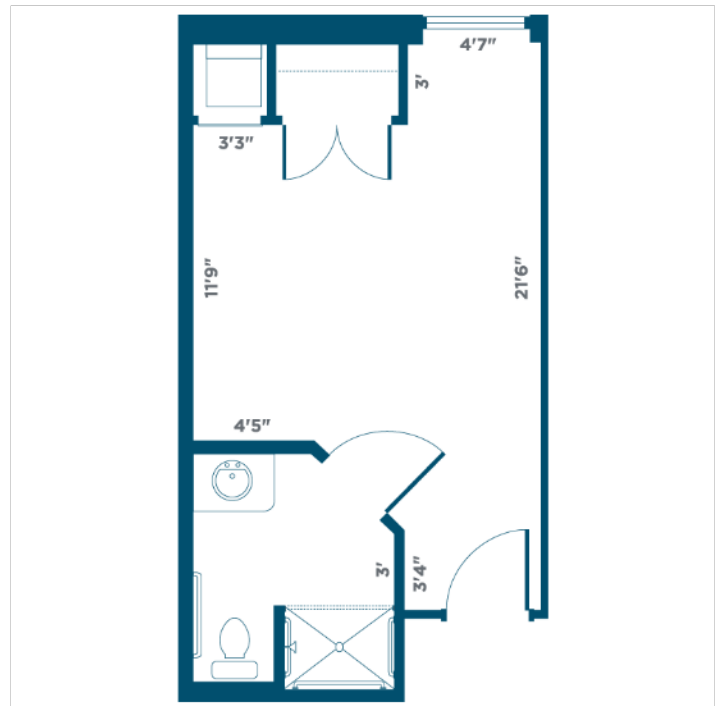
They are designed to facilitate the highest levels of safety and care.

All apartments include:

- *Individual thermostat controls*
- *Utilities (electricity, water, telephone, cable, and wifi)*
- *Housekeeping*
- *Trash service*
- *Pest control*
- *No property taxes*

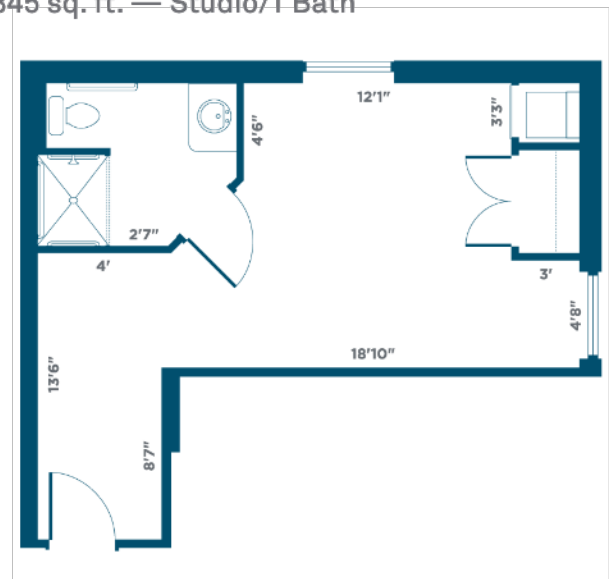
MC Studio Unit A

284 sq. ft. — Studio/1 Bath



MC Studio Unit B

345 sq. ft. — Studio/1 Bath



It's what's on the inside that counts.

When you're considering a senior living community, there are certain "must-haves." A choice of spacious apartments. A compassionate staff. Inviting meals you can look forward to. Outstanding care whenever care is needed.

At Somerby Lake Nona, we agree that these are, indeed, "must-haves." But as a Bridge Senior Living community, being great at those things is just the starting point, not the finish line. Because a great life demands more – much more – than simply being "good enough."

A feast for the body and the soul.



If food is the foundation of healthy living, mealtime may just be the foundation of a healthy community. After all, breaking bread with friends and family has been a principal way of building relationships, stirring the heart, and sharpening the mind throughout history.

At Somerby Lake Nona, we take the joy of mealtime seriously. Our dining services feature restaurant-quality, chef-prepared meals.

You'll always find something that reminds you of the best home cooking you've ever had, as well as options that may open new culinary doors. Of course, whatever you prefer, every meal will be delicious, nutritious, and customizable to your dietary needs.



Grow as a person, build stronger relationships, deepen your spirituality, expand your knowledge, and live with purpose.

All it takes is a single Spark.

Will you find outstanding amenities at Somerby Lake Nona? Of course. How about activities? More than space here will allow us to describe. But before we talk about those, let's talk about this: Discover Your Spark.

Discover Your Spark was developed by Bridge Senior Living to help our residents rekindle old hobbies and ignite new passions — to understand what styles and types of activities they enjoy the most and then suggest new avenues of exploring those passions from all angles. So you not only stay active, but you also grow as a person, build stronger relationships, deepen your spirituality, expand your knowledge, and live with purpose.

Our residents truly love Discover Your Spark and we believe you will, too. We also think you'll love all the wonderful amenities and activities you'll find at Somerby Lake Nona, including:

- *Personalized Memory Care, monitored and reviewed as needed*
- *Daily licensed staffing and personal assistance*
- *State-of-the-art wireless resident call system*
- *Nutritious chef-prepared meals served daily in restaurant-style dining*



- *Coastal-living design complete with pool, verandas, and outdoor living spaces*
- *Dynamic calendar of community activities and outings to promote physical, intellectual, social, and spiritual enrichment*
- *Wellness programs included*
- *Utilities and cable included*
- *Barbershop and salon with hair styling and manicures (additional charges apply)*
- *Housekeeping, maintenance, and transportation services*
- *Pet-friendly*
- *On-site fitness center with physical, speech, and occupational therapy services available*
- *Scenic walking trails*
- *Relaxing courtyards*
- *Scheduled transportation to off-site appointments and events*
- *Daily safety checks for all residents*
- *Medication management program*
- *Convenient in-house pharmacy*

More than a touch of useful technology.

While it may be great fun to reminisce about days gone by, few of us would care to return to using party-line telephones or adjusting rabbit ears on the ole television.

At Somerby Lake Nona, we don't just welcome the march of technological progress – we join in the innovation parade.



Bridge Senior Living App

Somerby Lake Nona is operated by Bridge Senior Living. So, naturally, we use the Bridge Senior Living App. Powered by LifeLoop, this app offers a central hub for residents, their families, friends, and staff to stay connected by sharing personalized activity schedules, photos, messages, and more.

Telehealth

The era of doctors making house calls is back – at least virtually. Not only do we offer technical support for your telehealth appointments, we even conduct appointments in the privacy of your room or apartment. It's convenient, safe, and thorough. Just what the doctor ordered.

Bridge Senior Living makes all the difference.

**BRIDGE
SENIOR
LIVING** Somerby Lake Nona is operated by Bridge Senior Living, recognized as one of the most innovative, senior living community management companies in the United States.

Beyond developing forward-thinking initiatives, such as the Bridge Senior Living App and Discover Your Spark, Bridge Senior Living stands apart for its commitment to resident safety with the Bridge Safe program. Bridge Safe ensures that we have enhanced safety protocols in place to protect our residents and the resources to put those protocols into practice. From enhanced cleaning and guest screenings to daily check-ins to enhanced air filtration, Bridge Safe helps keep Somerby Lake Nona as happy a community as possible.



Bridge Senior Living continues to pursue improvements and innovations across all aspects of community life. We're proud to be part of their family and welcome the opportunity to tell you more about how Bridge makes life at Somerby Lake Nona better every day.



An honest discussion about financial matters.

At Somerby Lake Nona, we understand that the costs associated with moving into a senior living community are one of the main concerns for potential residents and their families.

All rent, care fees, and other fees are disclosed within the insert provided. Plus, you don't have to pay any property or real estate taxes.

There are many options when it comes to financing a life at Somerby Lake Nona, including retirement savings, proceeds from selling your existing house, selling stocks and securities, etc. The options aren't quite limitless, but they are numerous. So again, we invite you to contact one of our experts to discuss matters further. And it truly will be a discussion and not a sales call. We promise.





What else would you like to know?

Seriously, we'd really love to hear from you and help you learn even more about what makes Somerby Lake Nona such a wonderful place. Yes, everyone here may be a bit biased, but we believe residents and staff alike would tell you that being a part of this community was the right decision for them.

Is it the right decision for you? That's not for us to say. After all, everyone's needs and situations are different. But you'll never know for sure unless you stop by and take a look around for yourself, which you are cordially invited to do.

To schedule your own visit at Somerby Lake Nona, please call 866-488-5442. We promise it will be a zero-pressure experience.

Take a tour, meet some residents, meet the staff, ask all the questions you like – even enjoy lunch if you time it right! Just give us a call and we'll make it happen.

To schedule a visit or for more information about Somerby Lake Nona, call 866-488-5442.

**Somerby Lake Nona
9682 Lake Nona Village Place
Orlando, FL 32827**